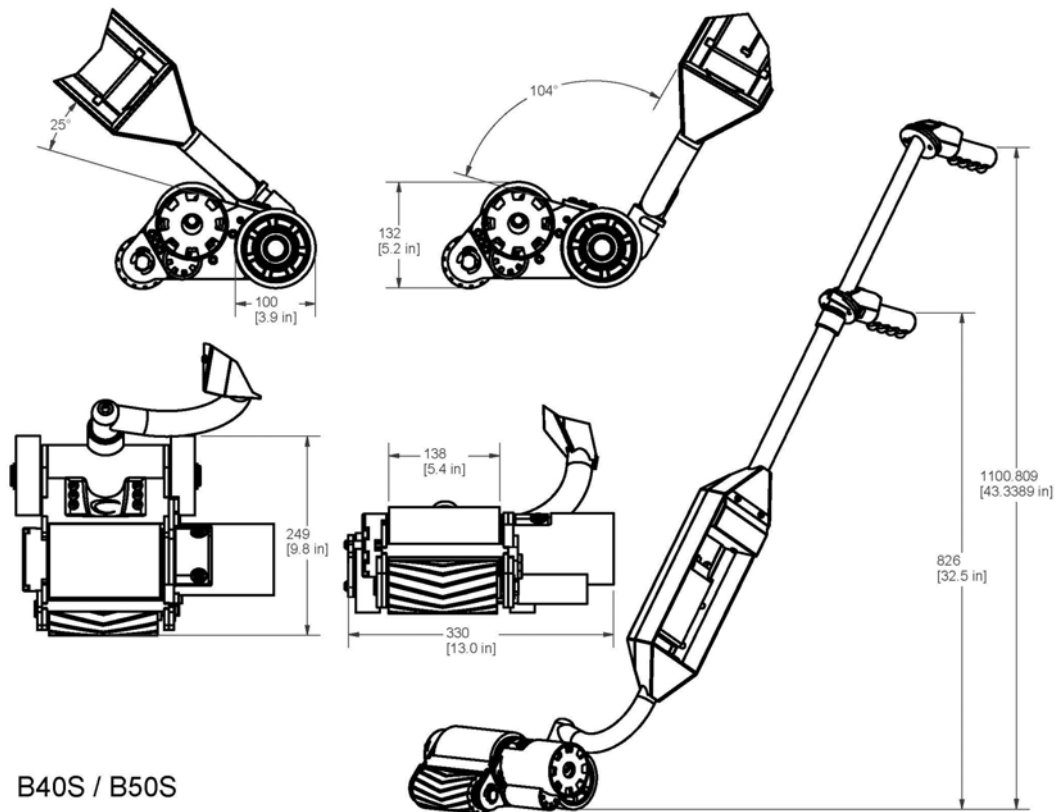




THE WORLD LEADER IN COMPACT MATERIAL HANDLING SOLUTIONS

POWERHANDLING B40S & B50S

- Battery-operated, 48V, rated for low duty-cycle (longer rest periods) and high load applications.
- Features PowerHandling's patented Direct-Drive (motor enclosed inside the drive roller) design using an un-cooled, sealed electric motor with heavy duty three-stage planetary gearbox.
- Incorporates a heavy-duty, all-welded, reinforced and chrome-plated main chassis (not bolt-together) that features large diameter (100mm/4") rear wheels for faster and easier maneuvering.
- All B-Series feature a swiveling "S" handle design allowing "separating" of rolls as well as a pivoting rear axle that allows the handle to be rotated forward to "pull" rolls/reels back toward the operator.
- Optionally a center ("C") straight handle can be specified (instead of the "S" handle) with the Hybrid" option (-HY) to allow both "rolling" and "pushing" of a load (e.g., for pushing a dollie-loaded roll laterally).



B40S / B50S

| BATTERY MODELS | Estimated Maximum Load | | | Speed Unloaded | Duty-Cycle Capability | Fan-Cooled / Overload Protection | Battery Voltage | Recharge Time |
|----------------|------------------------|---------------------|---------------------|----------------|-----------------------|----------------------------------|-----------------|---------------|
| | Cable, Flat | Paper, Flat | Paper, Lift | | | | | |
| | Metric Tonnes (Pounds) | | | m/min (ft/min) | (Low-High) | (Volts) | (Minutes) | |
| E20S | 6.2 (13,600) | 3.3 (7,200) | 0 | 21 (69) | Med-High | Yes/No | 36 NiCad | 30-45 |
| B30S | 11.0 (24,250) | 5.8 (12,750) | 3.0 (6,600) | 16 (52) | Low | No/No | 36 NiCad | 30-45 |
| B35S | 13.0 (28,500) | 7.0 (15,400) | 4.0 (8,800) | 12 (39) | Low | No/No | 36 NiCad | 30-45 |
| B40S | 15.7 (34,600) | 8.3 (18,200) | 5.9 (13,000) | 19 (62) | Low | No/Yes | 48 NiCad | 45-60 |
| B50S | 18.5 (40,700) | 9.7 (21,300) | 7.0 (15,400) | 15 (49) | Low | No/Yes | 48 NiCad | 45-60 |
| H40S | 20.0 (44,000) | 10.5 (23,100) | 7.5 (16,500) | 17 (55) | Med-High | Yes/Yes | 36 SLA | 120-180 |
| H50S | 23.5 (51,700) | 12.4 (27,300) | 8.8 (19,400) | 13 (42) | Med-High | Yes/Yes | 36 SLA | 120-180 |

PowerHandling Inc. endeavors to ensure all information provided in this Data Sheet is correct at the time of its publication. However it takes no responsibility for the accuracy, currency, reliability or correctness of the information provided. Note that all load weights in the above table are estimates and meant as a guide only. Each application should be tested to confirm performance. (Updated August 2008)